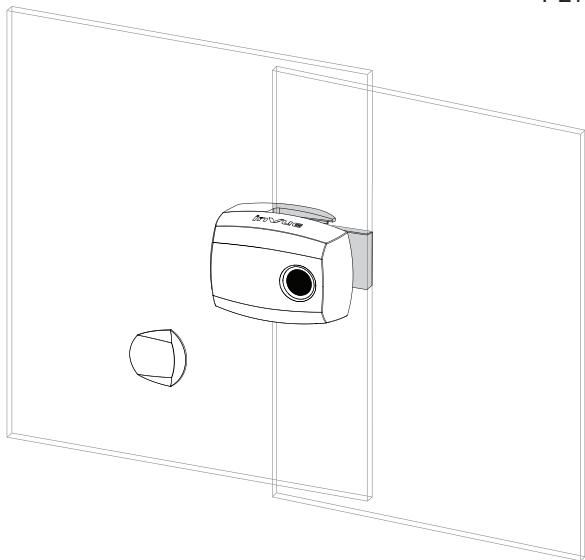


# invue

**Smart Lock**  
Universal Lock II  
PL103



## Overview

Review entire instruction guide before starting installation.

## Application & Cabinet Specifications

Universal Lock II is designed for panel gap applications (4.5 mm – 8.0 mm) and panel thicknesses (4.80 mm – 6.35 mm). Adhesive shims are available and can be purchased separately to aid in proper fit. See separate guide for cabinet evaluation sizing tool (PL153) to determine if shims are required.

## System Components

1. Universal Lock & Panel Handle (PL103)
2. Strike Plate (PL123)\*
3. IR2 Key (PK4400)

## Setup in 4 easy steps:

1. Mount strike plate onto back panel
2. Mount lock onto front panel
3. Use template to position panel handle
4. Use IR2 Key to operate lock



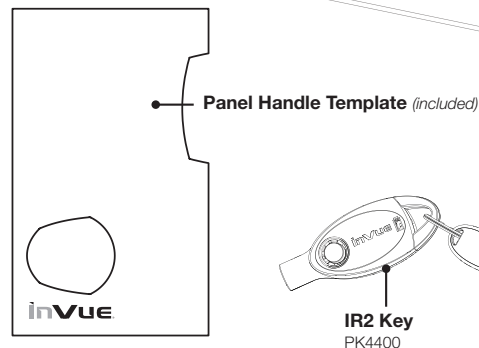
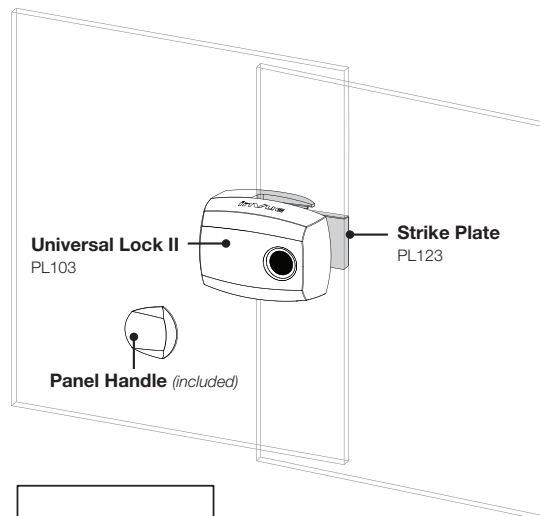
### Caution:

Wear appropriate safety gear (gloves and eye protection) when working with and around glass panels.

\*Multiple lengths available.

Note: Adhesive is single use. If damaged during installation replace with new adhesive.

FC CE N13611

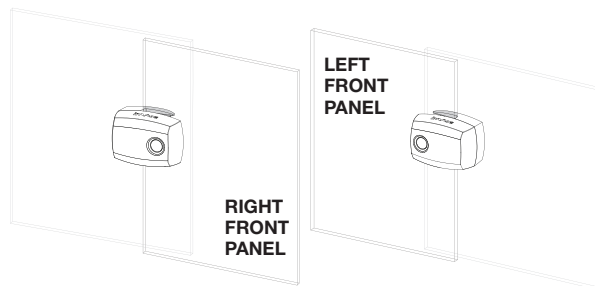


1

**Determine if front panel is on left or right hand side.**

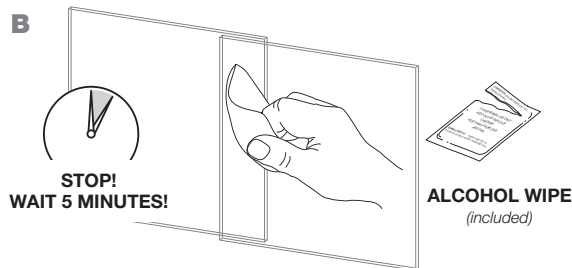
Note: Illustrations in booklet are for right front panel orientation.  
For left front panel cabinet install in opposite direction.

A



Wipe front and back of both panel surfaces with alcohol wipe where you intend to mount the lock.

B

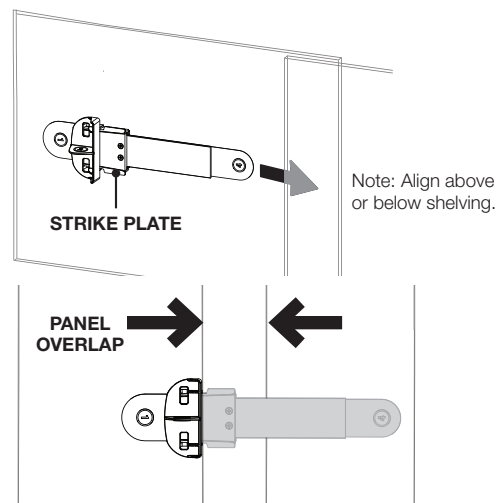


**IMPORTANT!**

Allow alcohol to air dry for a minimum of 5 minutes or dry alcohol with lint free cloth before moving to step 2.

2

**Fully close panels.** Insert correctly sized strike plate behind front panel where lock will be positioned. Use sizing tool (PL153) or strike plate selection guide below to identify correct part.



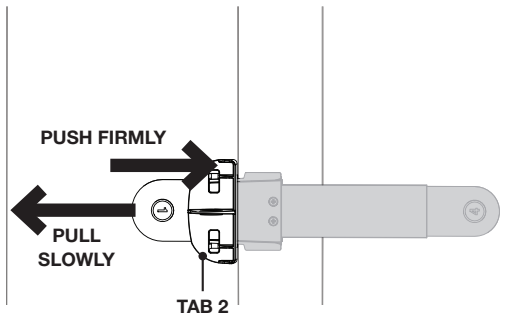
Note: Strike Plate size is determined by width of panel overlap.

#### Strike Plate Selection Guide:

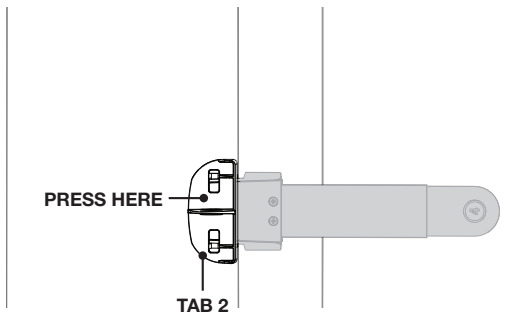
Panel Overlap	Order Code
22 - 25 mm	PL123-1
26 - 35 mm	PL123-2
36 - 55 mm	PL123-3
56 - 85 mm	PL123-4
86 - 110 mm	PL123-5

**3**

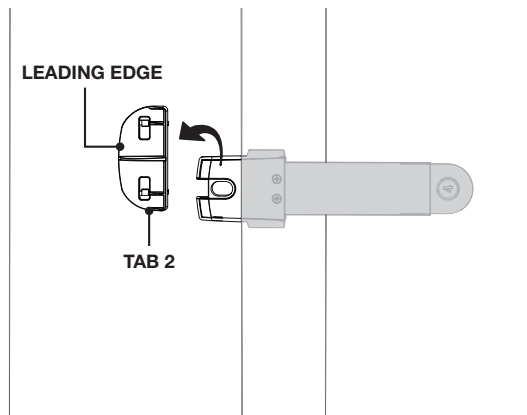
*Push tab 2 firmly against edge of front panel while SLOWLY pulling tab 1.*

**A**

*Press tab 2 towards back panel and hold for 10 seconds.*

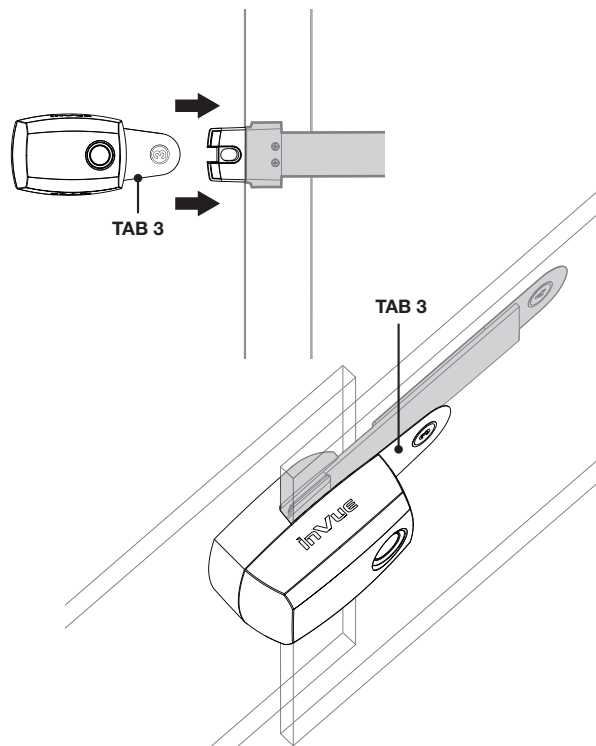
**B****4**

*Break off tab 2 by pulling firmly on leading edge. Discard tab 2.*



5

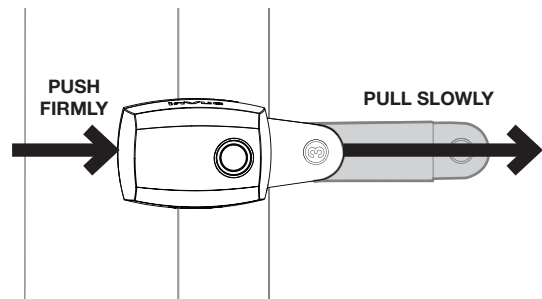
Slide lock onto edge of front panel and over strike plate. **Important! Tab 3 should remain on outside of front panel.**



6

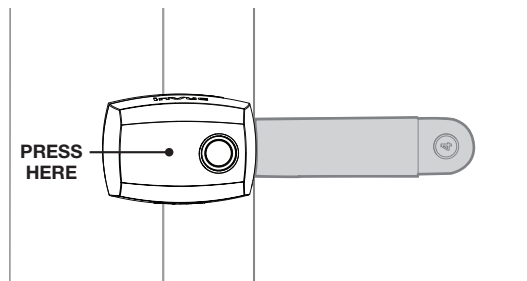
Push lock firmly against edge of front panel while **SLOWLY** pulling tab 3.

A

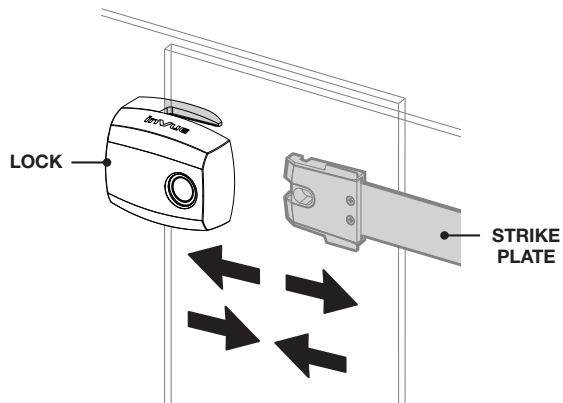


After tab 3 has been removed, press lock against front panel for 10 seconds to set adhesive.

B

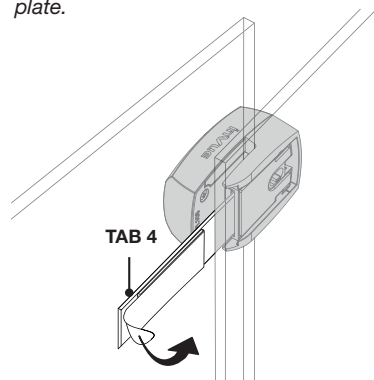


- 7** Open and close panels to ensure lock and strike plate engage smoothly.



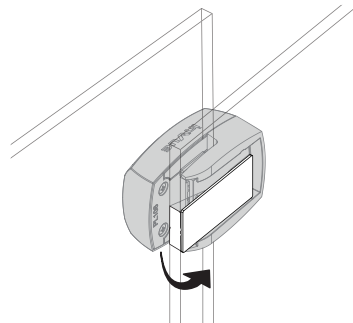
- 8** Open panel. Peel away tab 4 on back side of strike plate.

**A**



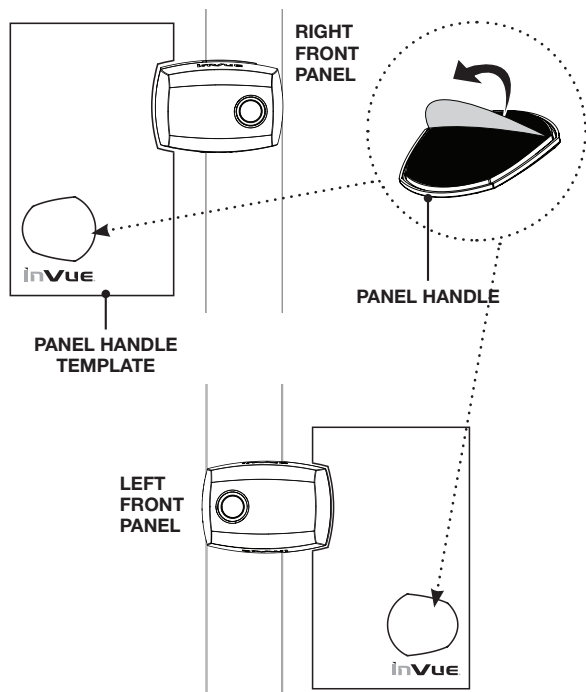
*Tightly wrap strap around back panel. Firmly press entire surface of strap to ensure full contact with panel. Repeat and press down entire surface 10 times.*

**B**

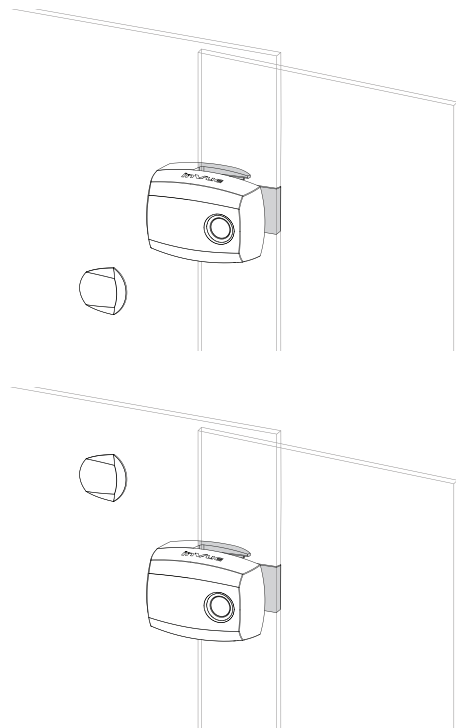


9

*Fully close panels. Position template against lock body. Remove clear film on panel handle. Position handle inside template and press for 10 seconds against panel to set adhesive.*

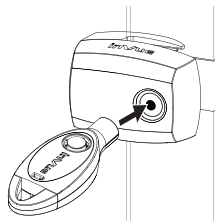


Note: Panel Handle can be installed above or below lock.



10

Use panel handle to ensure glass panels are fully closed. Position IR2 Key\* against lock, push button and wait for "beep" before removing key. Lock and unlock product several times to ensure proper operation.

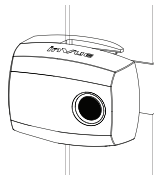


\*IR2 Key must be charged and activated. See IR2 Key instruction guide.

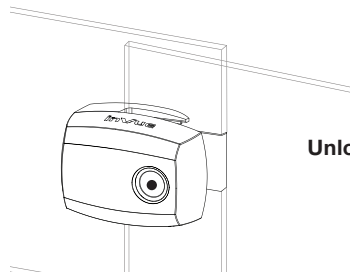
**PRESS  
HERE**



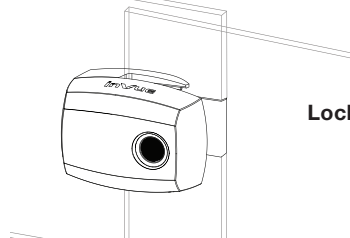
Note: If double "buzz," then an error has occurred. Ensure panels are fully closed and try again.



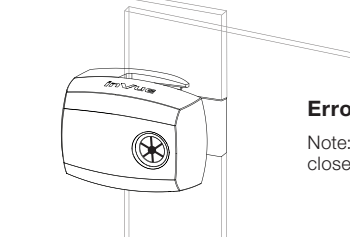
## LOCK STATUS INDICATORS



**Unlocked**



**Locked**



**Error (not fully locked)**

Note: Ensure panels are fully closed and try again)





tough security made easy

**[www.invuesecurity.com](http://www.invuesecurity.com)**

**Corporate Office (North America) // 704.752.6513 • 888.55.INVUE**

**Europe, Middle East & Africa // +31.23.8900150**

**Asia Pacific // +65.6766.4844**

**Latin America // +52.55.9000.3957**